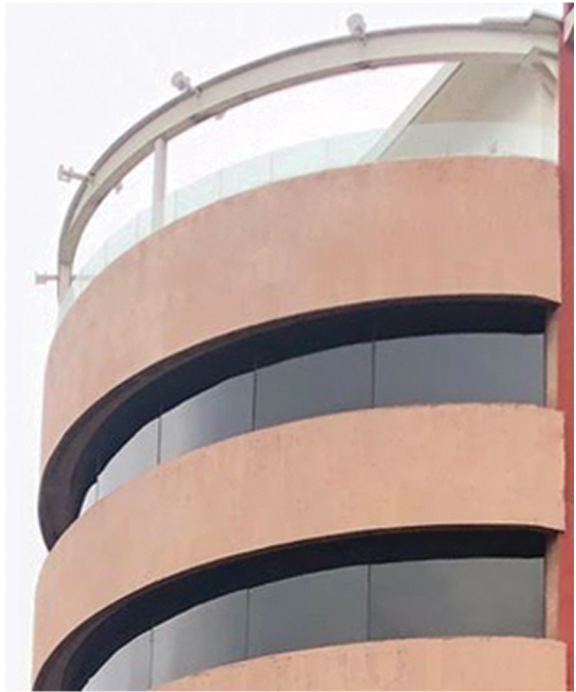
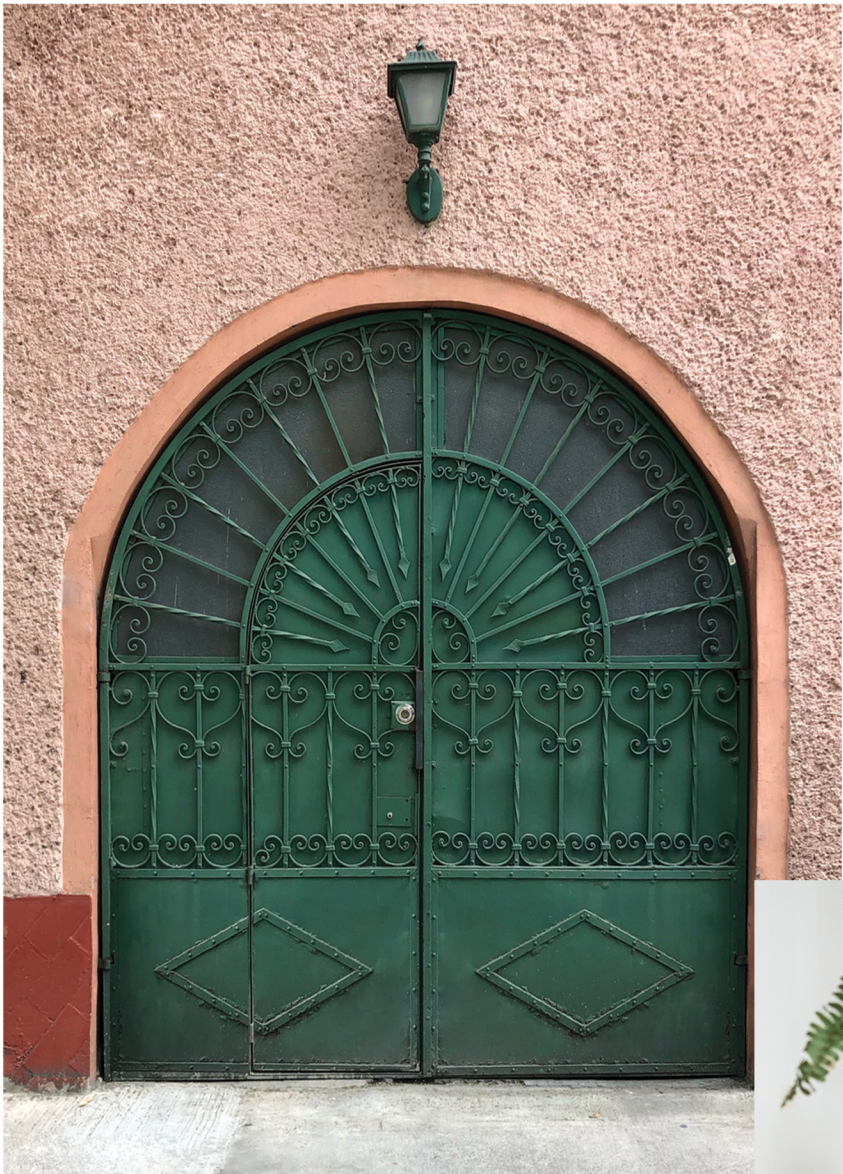


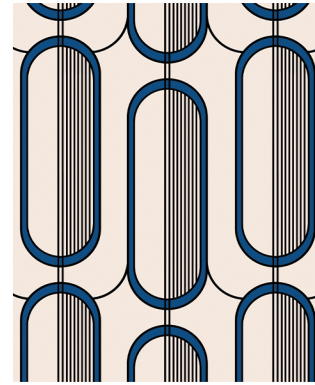
# DECO COLLECTION

Let's take it back to Mexico City during the 1920s. A vibrant culture on the cusp of a visual art movement consisting of bright colors, geometric shapes, and curvilinear forms known as Art Deco. Lavished with architecture, art, and greenery, La Condesa and Roma, inspired Deco an interpretation of two neighborhoods that today remains a modern version of the past.

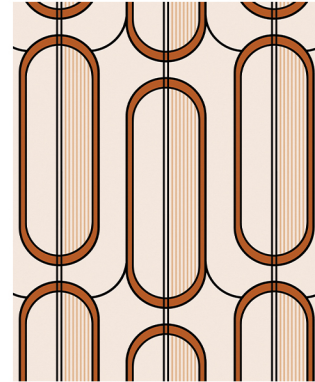




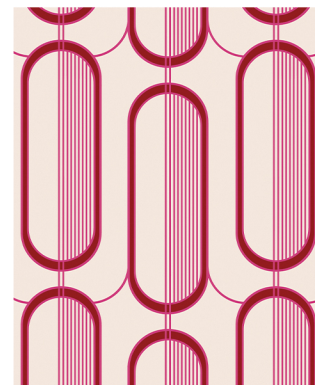
CONDESA



CLASSIC BLUE  
CONDESA

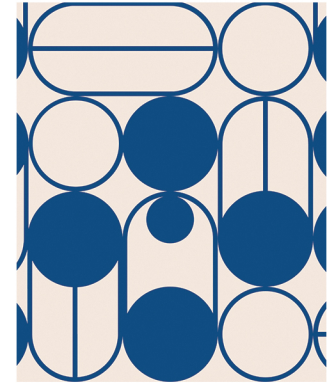


BURNT ORANGE  
CONDESA

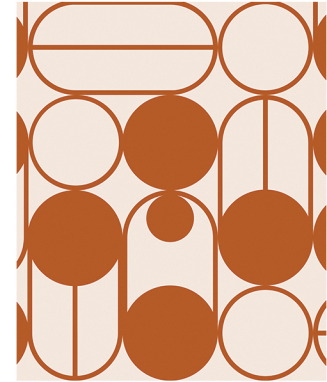


PINK RED  
CONDESA

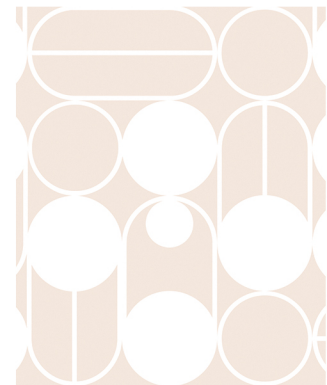
ROMA NORTE



CLASSIC BLUE  
ROMA NORTE



BURNT ORANGE  
ROMA NORTE



CREAM  
ROMA NORTE