

# FLOR COLLECTION



Flor pays homage to the organic, natural beauty of flowers. Flowers have changed the landscape of the world, nurturing the bodies and souls of insects, birds, animals and humans. The Flor Collection is decidedly crisp and modern with a lovely Lola edge. We've infused wildflowers in our design, pairing them with raw branches and even geometric shapes. Our collection plays sweet yet can also swing sassy.

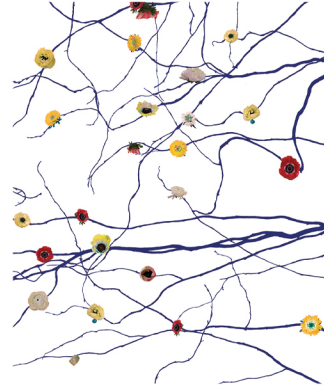








CAROLINE



BLUE CAROLINE

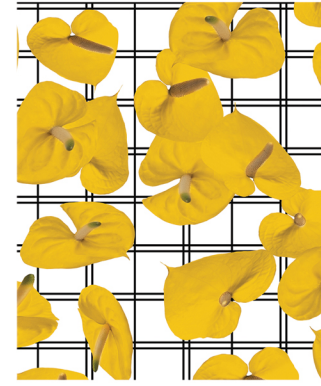


ONYX CAROLINE

ANTHURIUM



RED ANTHURIUM



YELLOW ANTHURIUM

ROSA



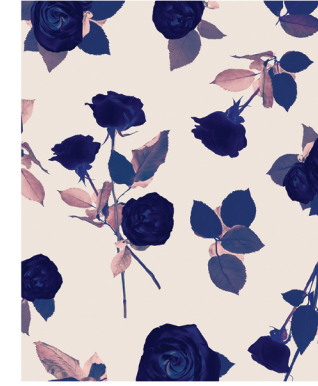
PINK RED ROSA



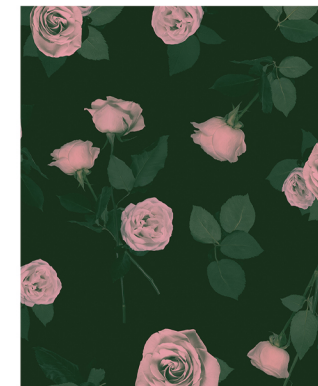
MUSTARD BLACK ROSA



IVORY BLACK ROSA

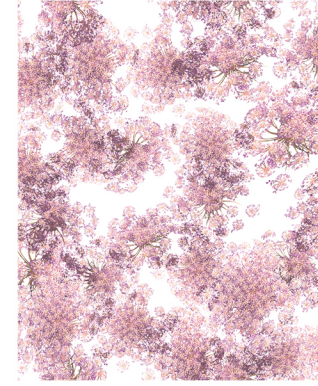


IVORY BLUE ROSA

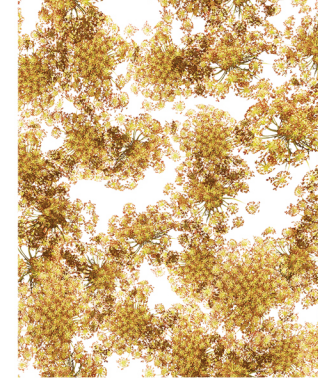


HUNTER PINK ROSA

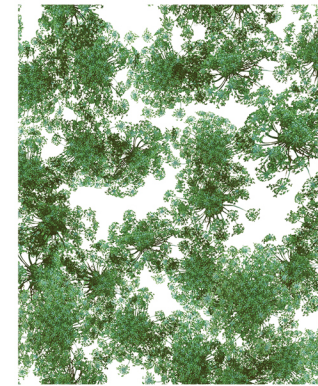
ANNE'S LACE



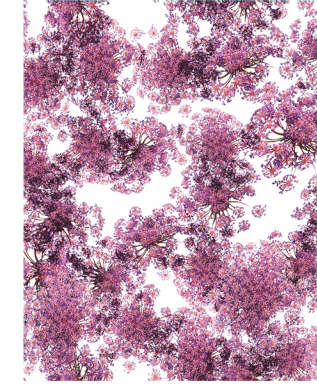
PINK ANNE'S LACE



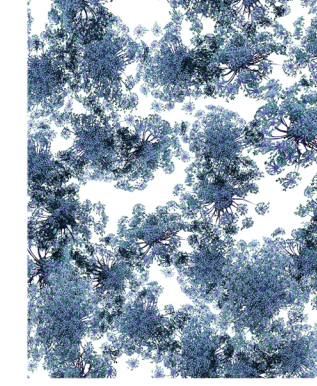
YELLOW ANNE'S LACE



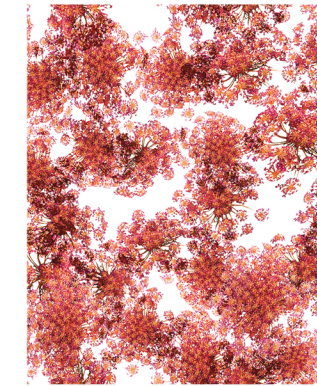
GREEN ANNE'S LACE



PLUM ANNE'S LACE



BLUE ANN'S LACE



CORAL ANNE'S LACE